

BI Documenter

10/19/2009



GET AHEAD IN THE DATABASE DOCUMENTATION
ARENA

BI Documenter – An overview | Anil Mahadev Technical Solutions
Consultant(SQL And SharePoint)

BI Documenter – Put a to your Database Documentation Forever!

Have you been manually writing and authoring database related documentation from your database? Many of us have been doing that for ages, without having a tool that could do the job for us. Well Database documentation is fine, what about BI documentation? Huh... BI Documentation, how is that possible? Not only that, even SQL Server Reporting Services as well!

Say hello to BI Documenter.

This article aims to demystify the problems associated with Database documentation.

Specifically, we shall be taking a quick tour on the BI – Documenter product

To download a trial / purchase BI Documenter, visit the company product's website at <http://www.bidocumenter.com/Public/Default.aspx>

We will be working with the Trial version.

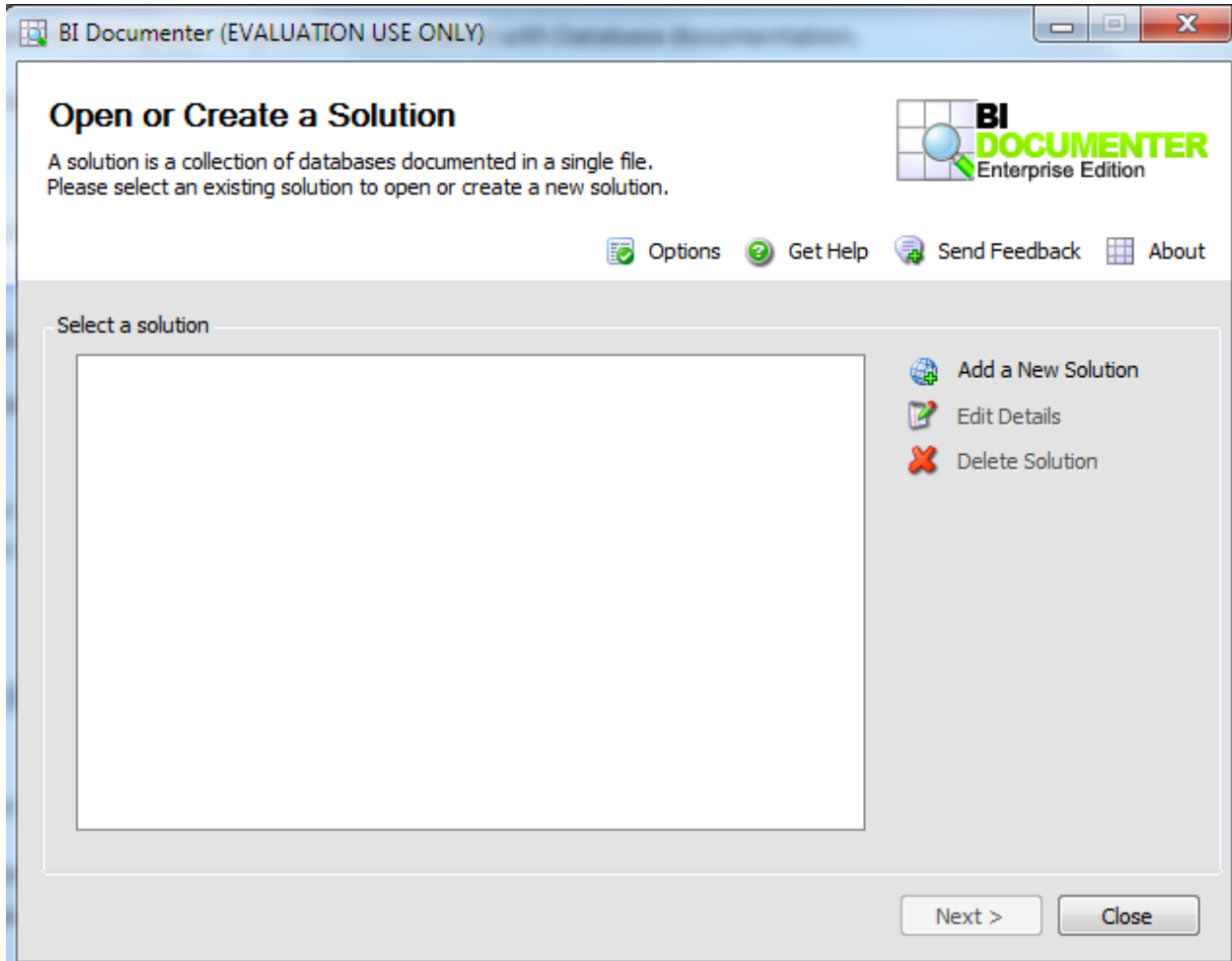
In this short article, we shall be creating a simple documentation project that utilizes the following scenario.

- 1) How to create documentation for the AdventureWorks2008 Database

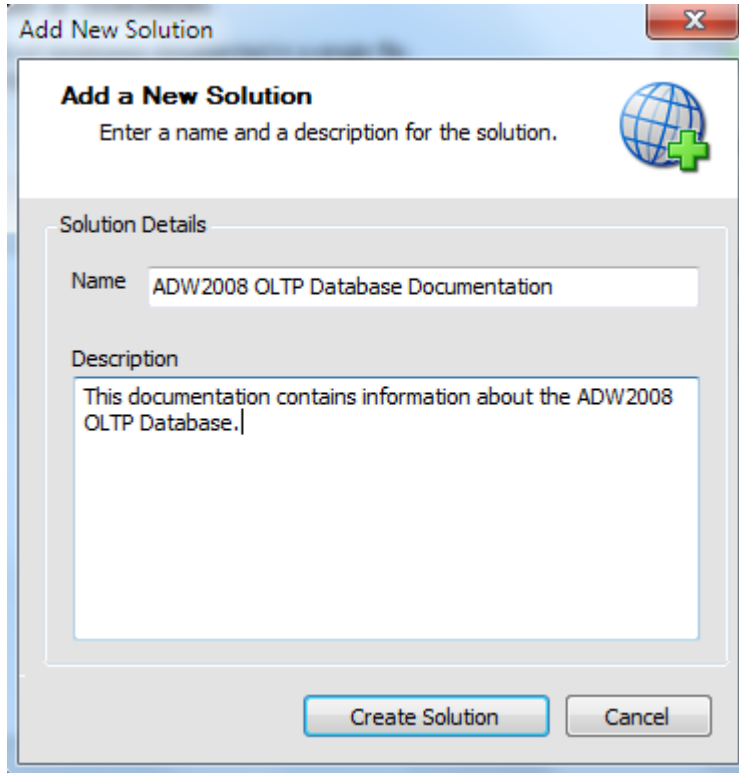
Starting BI Documenter

Click on Start → All Programs → BI Documenter 3 → BI Documenter 3

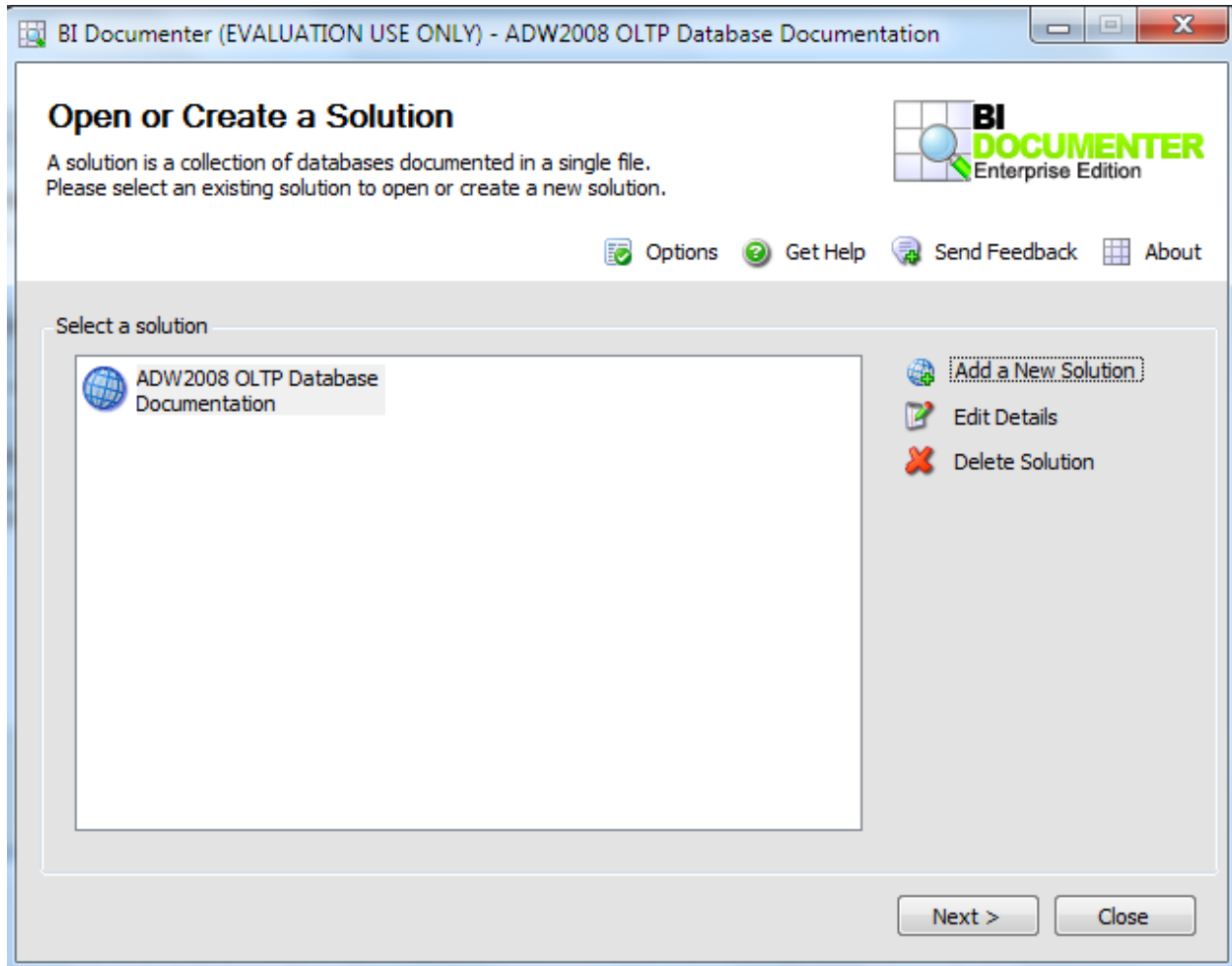
Once in the interface, you will be amazed with the simplicity it offers with not too many options as shown below.



To create a new project, click on Add a Solution. A new dialog appears and allows you to enter the solution name along with a description as shown below



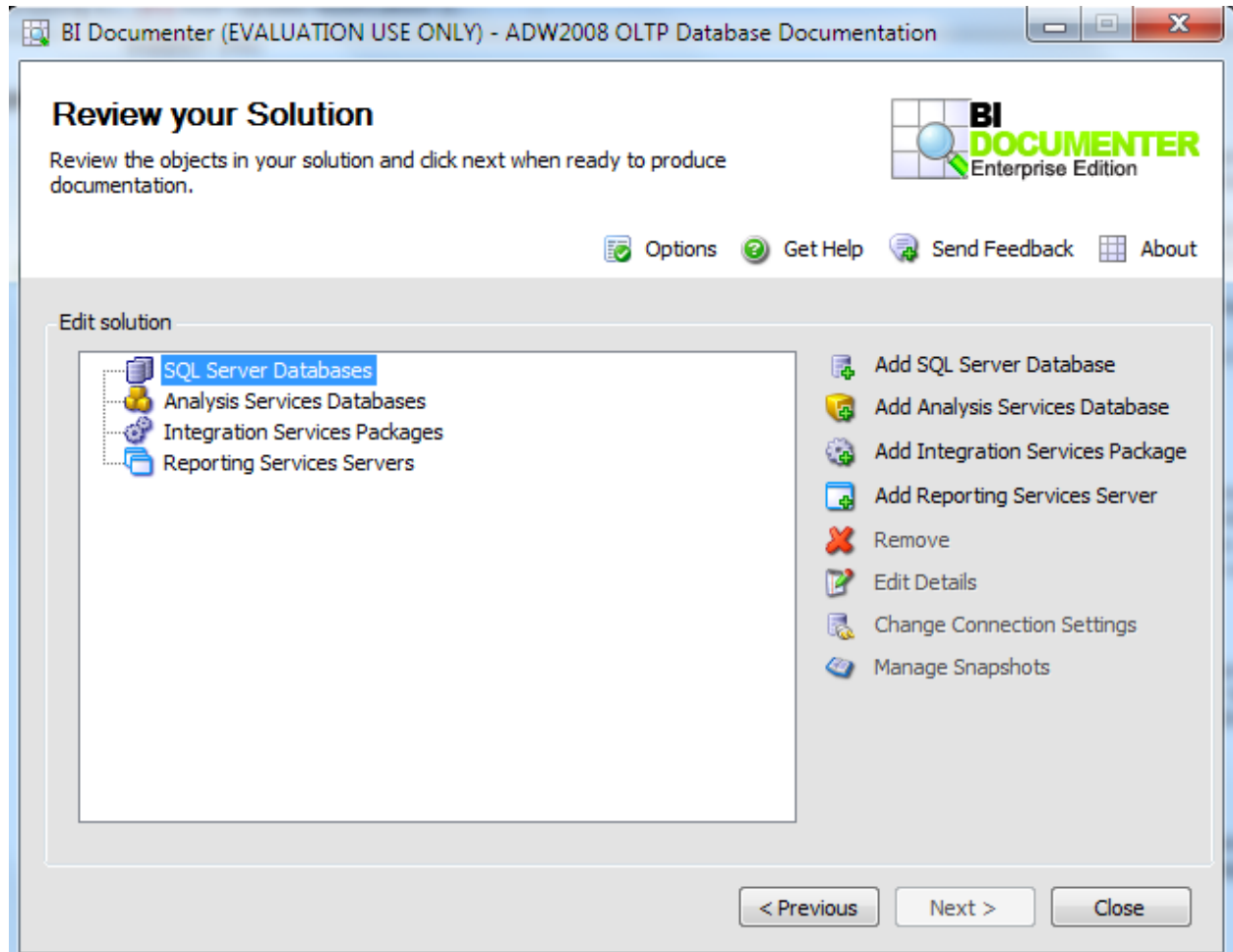
Once complete click on Create Solution. Now the solution appears in the main interface as shown below



At this point, we have setup our initial project solution. We shall now move on to selecting our database.

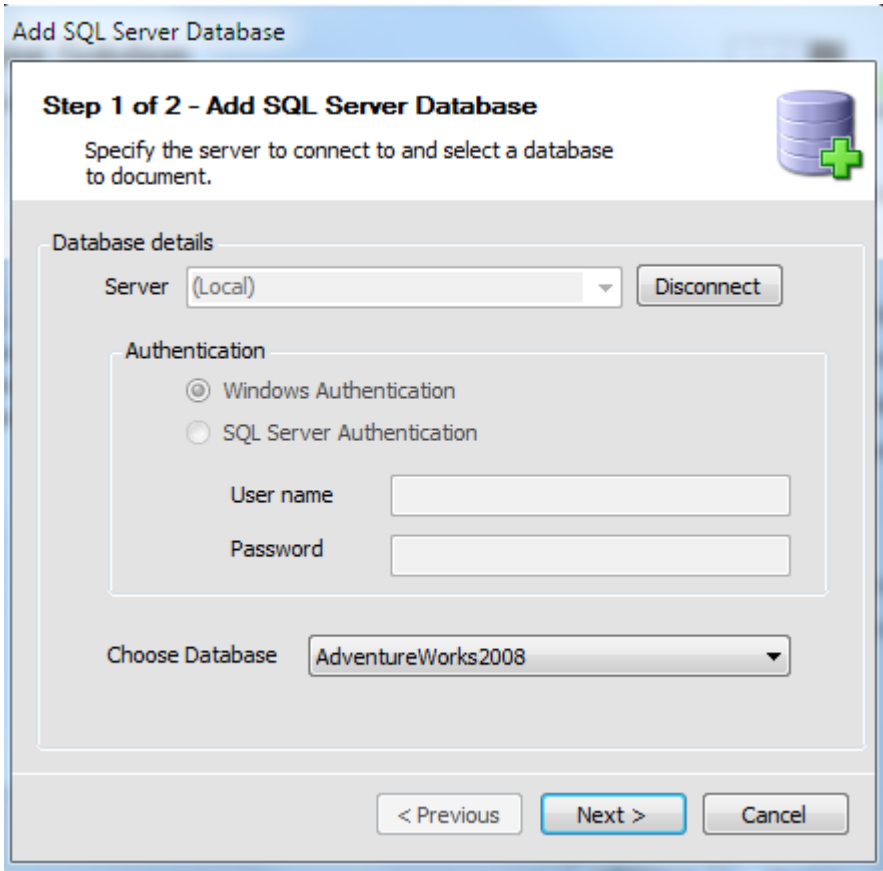
Click Next to continue

Now you can choose between any of the given choices, for the purposes of this article, we shall choose SQL Server as shown below

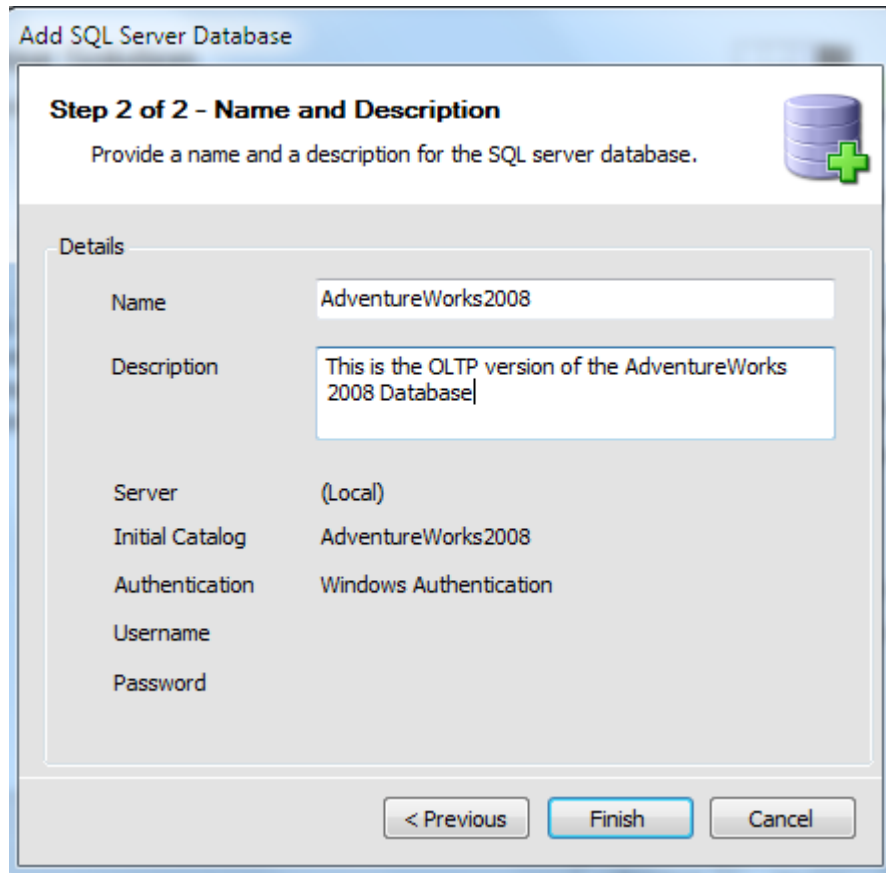


Now to add a SQL Server to the project, click on Add SQL Server Database

Choose the SQL Server in your network environment and enter the required credentials (Windows Authentication preferred) finally choose AdventureWorks2008 as the database in the figure shown below



Click Next to continue. In this screen, one would be asked to enter additional information as needed for the database as shown below.



Click Finish to proceed

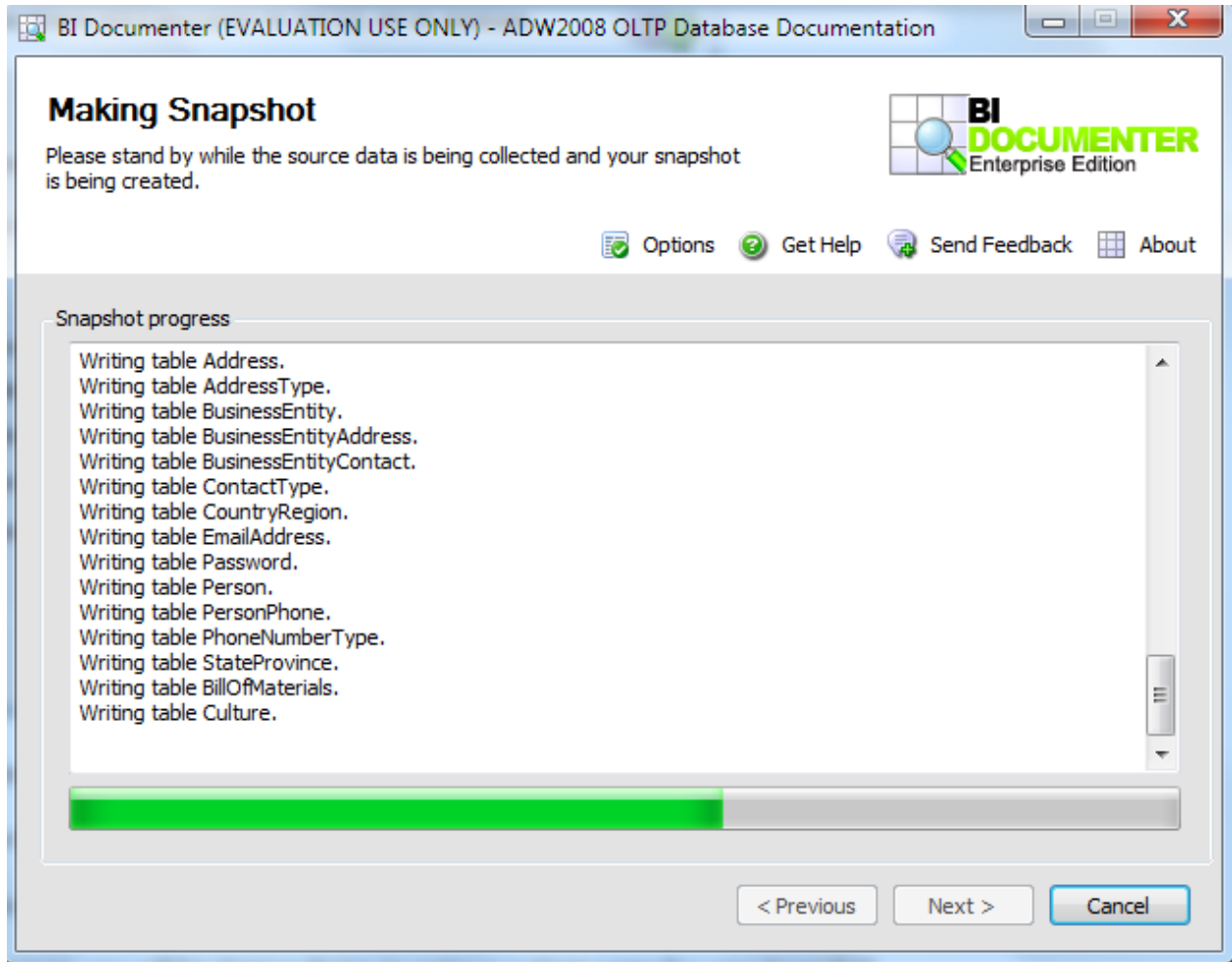
You will now be able to see the AdventureWorks2008 Database under the SQL Server section.

Click Next to continue

In the next screen, you will be given a choice to enter a custom name for your Snapshot.

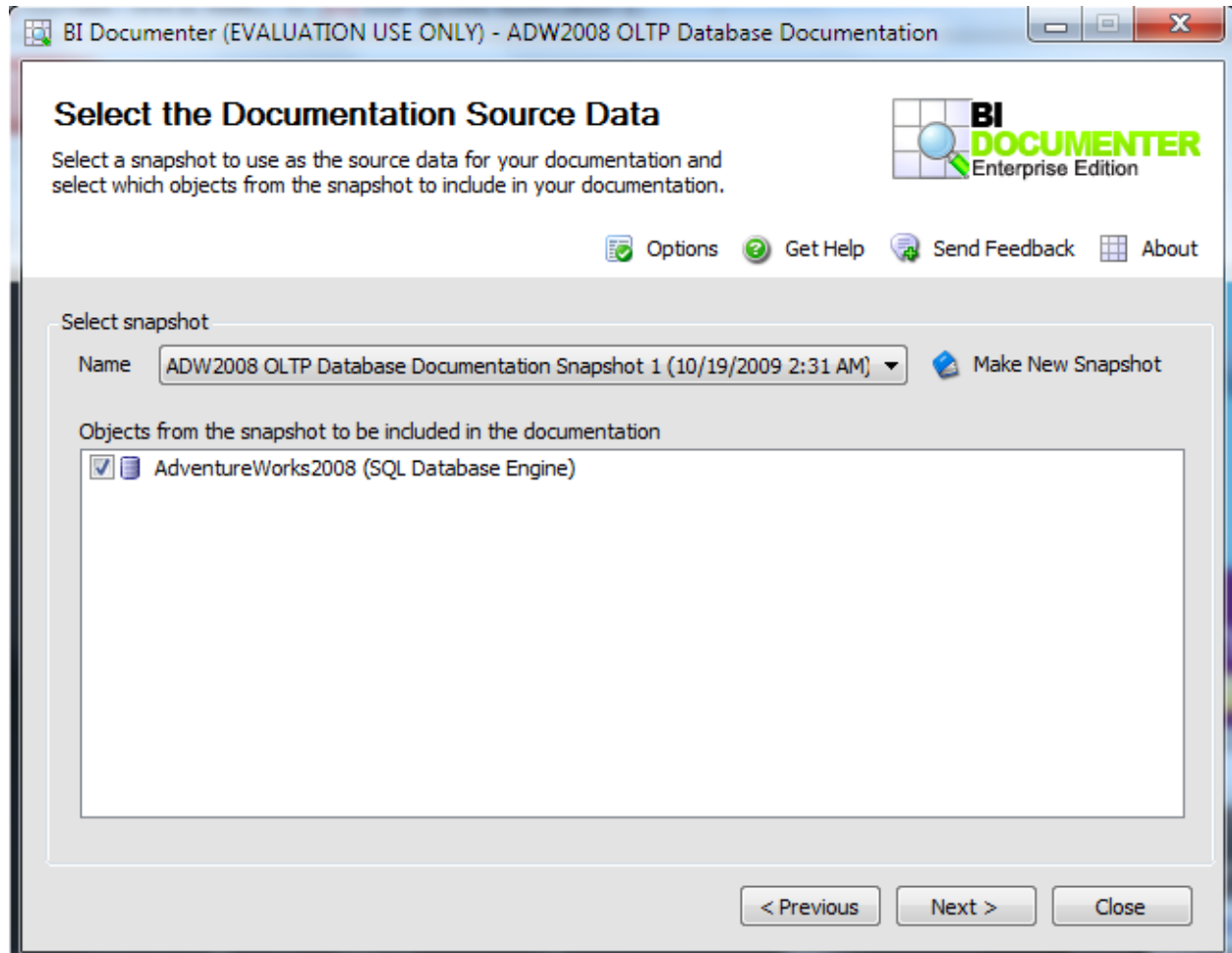
Click Next to continue

The snapshot acquisition process will now begin as shown below



Wait for it to complete and Click Next to continue

Now you can see the Snapshot for the database



Click Next to continue

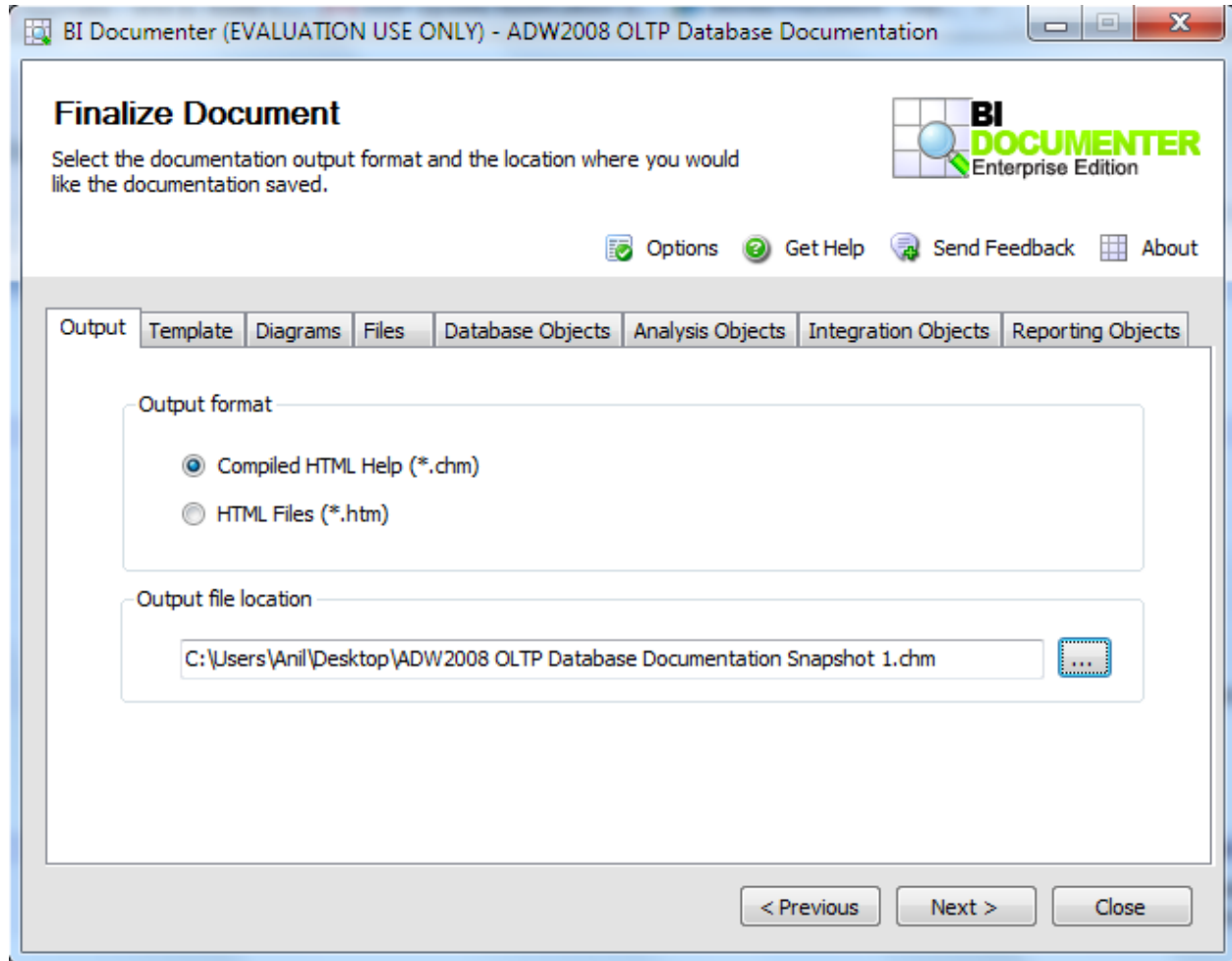
Now we come to the best part, the document finalization.

We will pay attention to the Output Tab. The remaining tabs are self-explanatory and can allow one to choose specific objects within the database. We will go with the defaults

You can choose between two formats

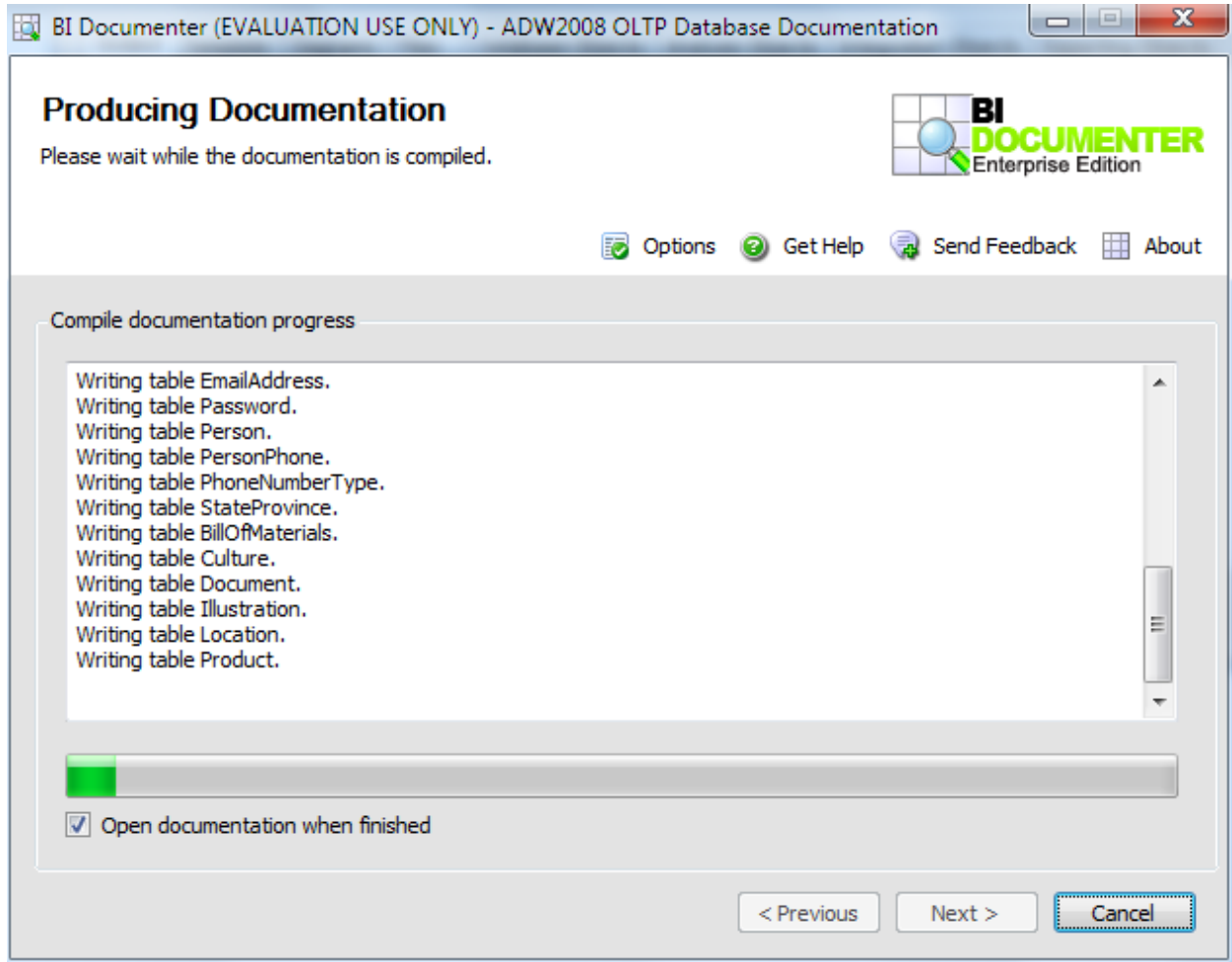
- 1) CHM or
- 2) HTML

For the purpose of this article, we shall go ahead with CHM. And also specify the output location for the CHM file to be stored as shown below



Now let the tool do the Magic☺!

Click Next to continue and you can witness the documentation generation process as shown below



Now to view the finished document, click Finish.

Here is our final result

Solution: ADW2008 OLTP Database Documentation
Snapshot: ADW2008 OLTP Database Documentation Snapshot 1
EVALUATION USE ONLY

AdventureWorks2008

Snapshot Properties

Property	Value
Snapshot Name	ADW2008 OLTP Database Documentation Snapshot 1
Snapshot Description	
Snapshot Taken	Monday, October 19, 2009 2:31 AM
Solution Name	ADW2008 OLTP Database Documentation
Solution Description	This documentation contains information about the ADW2008 OLTP Database.

AdventureWorks2008 (SQL Server Relational Database)

Property	Value
Name	AdventureWorks2008
Object Type	SQL Server Relational Database
Description	This is the OLTP version of the AdventureWorks 2008 Database
Source	(Local)
Initial Catalog	AdventureWorks2008
Authentication Type	Windows Authentication
User name	

Excellent! We now have achieved Database Documentation Power☺!



This completes our article and introductory tutorial about BI Documenter. There are other great features. This article, should have given you all a heads up into working with BI Documenter and putting an end to Database Documentation worries.

Please do share your feedback about this article via e-mail: Anil Mahadev, anilm2010@gmail.com

In the subject line please mention: "BI Documenter Article Feedback"